

State of Wyoming Corner Record

(In compliance with the *CORNER PERPETUATION AND FILING ACT*, Wyoming Statutes, 1977, Section 36-11-101, et. seq., and the Rules and Regulations of the Board of Registration for Professional Engineers and Professional Land Surveyors)

Reverse side of this form may be used if more space is needed.

Record of original survey and citation of source of historical information (if corner is lost or obliterated). Description of corner monumentation evidence found and/or monument and accessories established to perpetuate the location of this corner. Sketch of relative location of monument, accessories, and reference points with course and distance to adjacent corner(s) (if determined in this survey). Method and rationale for reestablishment of lost or obliterated corner.

Section Corner of Sections 2,3, 10 and 11, T.12N., R.63W., 6th P.M., Laramie County, Wyoming.

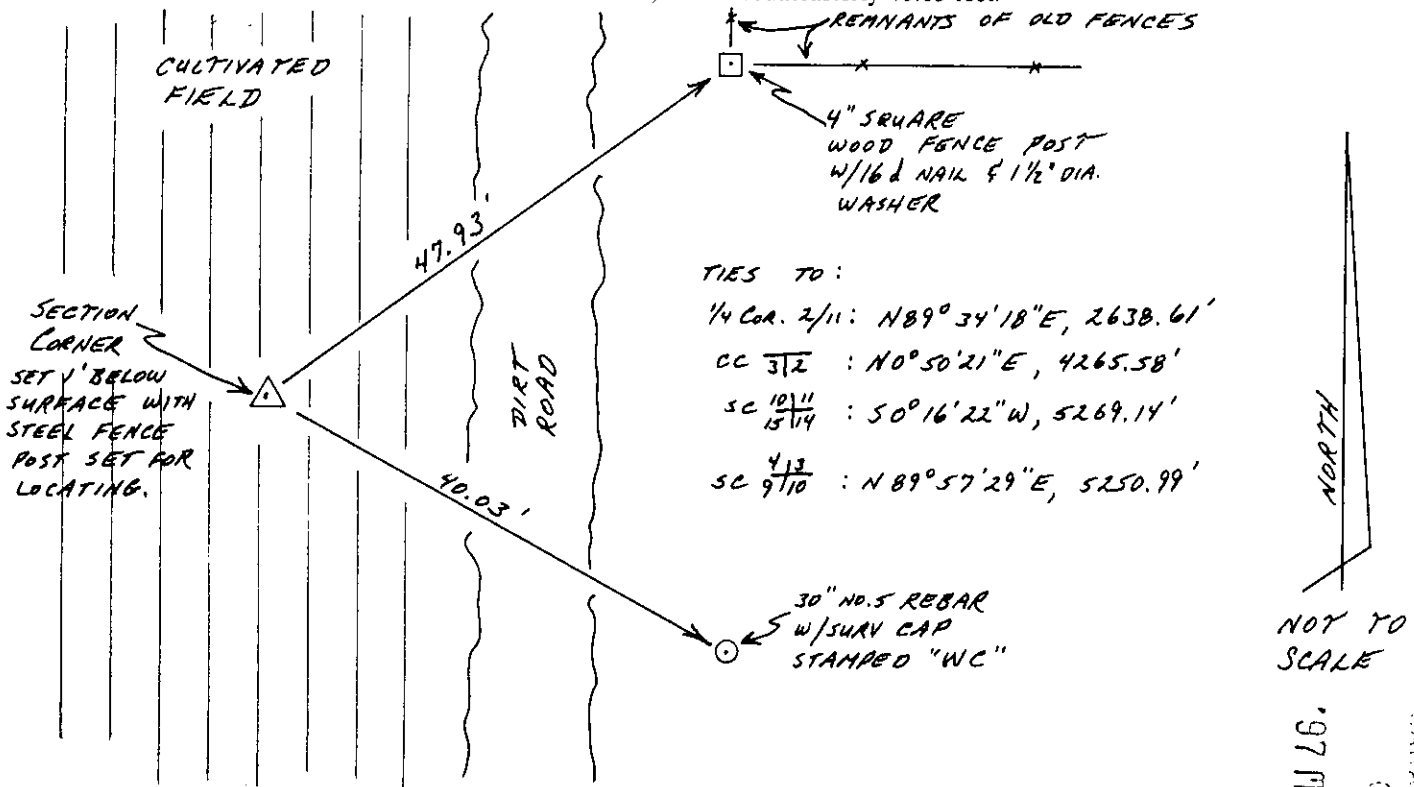
G.L.O. RECORD: 2" dia. X 36" long iron pipe with 2" brass cap: Edwin H. VanAntwerp, 1911.

OTHER RECORDS: none.

FOUND: no evidence of G.L.O. monument. Position of corner falls in a cultivated field with no supporting evidences of the true original position in the immediate area.

SET: 30" long No.5 rebar a 2½" dia. aluminum survey cap stamped in accordance with B.L.M. Manual of Instructions and with "WYO. P.L.S. NO. 4828". This corner was reestablished by the double proportionment procedure using the ¼ Cor. Sec. 2 & 11 and Sec. Cor. 3,4,9 & 10 for the east-west control; Sec. Cor. 10, 11, 14 & 15 and C.C. Cor. Sec. 2 & 3 for the north-south control.

Also set a 16d nail with a 1½" dia. washers in a 4" square fence post at the westerly terminus of an old fenceline and situate northeasterly of the corner 47.93 feet; also set a 30" long No.5 rebar with 1½" dia. aluminum survey cap stamped in the center "WC", and with "WYO. P.L.S. NO. 4828", situate southeasterly 40.03 feet.

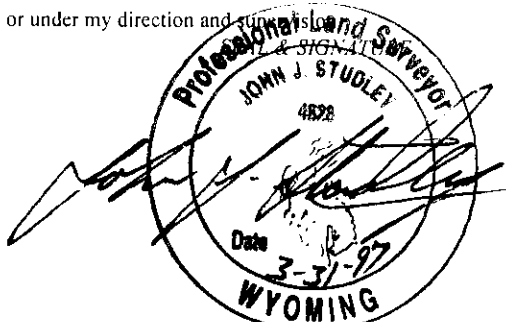


CROSS INDEX DIAGRAM

	1	2	3	4	5	6	7	8	9	10	11	12	13	14	15	16	17	18	19	20	21	22	23	24	25
A																									
B																									
C		6		5		4		3		2		1													
D																									
E																									
F																									
G			7		8		9		10		11		12												
H																									
J																									
K																									
L			18		17		16		15		14		13												
M																									
N																									
O																									
P			19		20		21		22		23		24												
Q																									
R																									
S																									
T			30		29		28		27		26		25												
U																									
V																									
W																									
X			31		32		33		34		35		36												
Y																									
Z	1	2	3	4	5	6	7	8	9	10	11	12	13	14	15	16	17	18	19	20	21	22	23	24	25

Date of Field Work: March 1997
 Office Reference: _____
 Firm/Agency, Address
John J. Studley, WY P.L.S. No. 4828
3509 Frontier Street
Cheyenne, Wyoming 82001
 Telephone Number: (307) 634-3358

This corner record was prepared by me or under my direction and signature of the Professional Land Surveyor.



Corner Name: Section Corner Sections: 2,3,10 & 11 T. 12 N., R. 63 W., 6th P.M.
 Cross-Index No. E-17
 SBRPEPLS/PLSW: March 1994